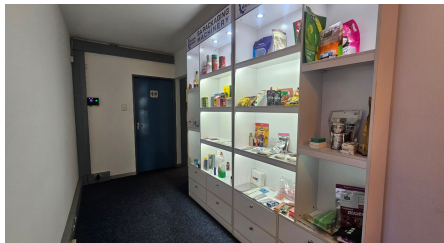


Sandton, Gauteng

**AAA-Grade Fitted Office and
Warehousing TO LET in
Eastgate Sandton**



Well laid out office, space with additional offices that have been put in place, that can be removed. Good sized warehouse, 5m to the eaves. The warehouse has one on-grade roller shutter with 80amps 3 phase power supply. Availability is negotiable.

The Eastgate Industrial node, is extremely sought after due to its locality. It has quick highway access to the M1 Marlboro as well as the N3 Marlboro as it is situated in between the two. Direct access to Kramerville, Sandton Central and Woodmead as well.

R38,250 PM

excl. VAT & Utilities

price per m²: R85

**WEB REFERENCE NO.
COM21038**

Go to 3cubeproperty.co.za

for more information about this property



FEATURES

Gross Monthly Rental R38,250 Excl. VAT
Available From Negotiable
Lease Period 36 months

Building Size (m²) 450
Zoning Industrial
Security Yes

Power 3 Phase Yes
Power Amps 80
Air Conditioning Yes

CONTACT

CASSANDRA DELACOVIA

071 895 8267 / (010) 3006441

cassie@3cubeproperty.co.za