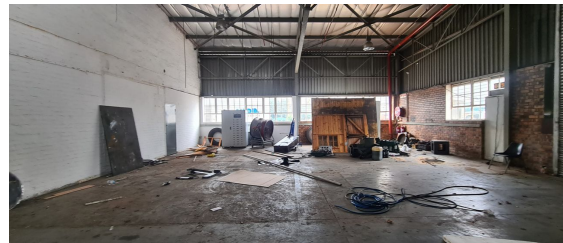
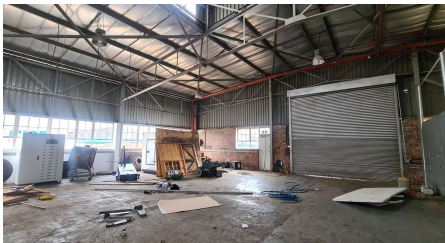
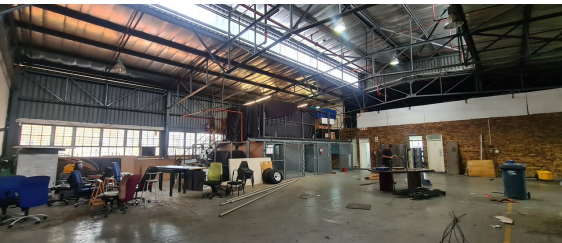


Sandton, Gauteng

**Warehousing Opportunity
Within a Secure Park in
Eastgate, Sandton**



This warehouse will be reinstated to accommodate for a new tenant. The warehouse itself has 2 roller shutter doors and 3 phase power supply. The mezzanine and racking shall remain in place. Excellent truck access and use of the land behind the warehouse. Ideal for warehousing in the Kramerville area. Situated in a very secure park, 1.3km to the Marlboro onramp. Occupation 1 March 2025.

The Eastgate Industrial node, is extremely sought after due to its locality. It has quick highway access to the M1 Marlboro as well as the N3 Marlboro as it is situated in between the two. Direct access to Kramerville, Sandton Central and Woodmead as well.

R50,796 PM

excl. VAT & Utilities

price per m²: R68

FEATURES

Gross Monthly Rental R50,796 Excl. VAT
Available From March 1, 2024
Lease Period 36 months

Building Size (m²) 747
Zoning Industrial
Security Yes

Power 3 Phase Yes
Power Amps 250
Air Conditioning No

**WEB REFERENCE NO.
COM20900**

Go to 3cubeproperty.co.za
for more information about this property



CONTACT
CASSANDRA DELACOVIA

071 895 8267 / (010) 3006441

cassie@3cubeproperty.co.za