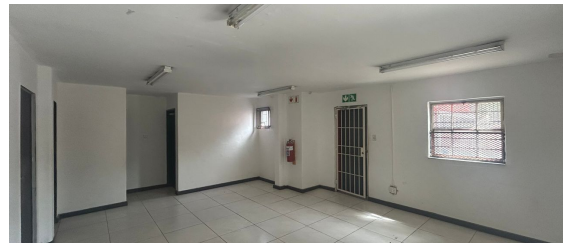
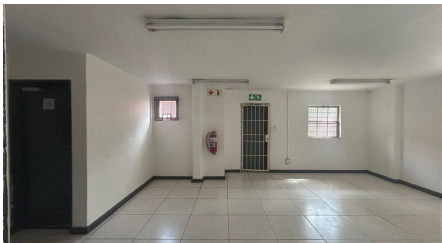


Randburg, Gauteng

**Industrial Warehouse To Let
in Strijdom Park**



Discover the perfect space for your business with this 431m² unit, offering a blend of functionality and flexibility to suit a variety of industries. This well-maintained property features an open-plan design with high ceilings for optimal usability and a large roller shutter door for seamless access. Its adaptable layout makes it ideal for warehousing, light manufacturing, or office conversions, while the robust power supply supports diverse operational needs.

Strategically located just minutes from the N1 and Malibongwe Drive, this property ensures excellent connectivity to major transport routes and is surrounded by a thriving industrial and retail network near Randburg CBD. The site offers 24/7 security, including CCTV and secure parking, providing peace of mind for your business. With easy logistics support, convenient access, and proximity to key amenities, this unit is a practical choice for growing businesses.

R34,480 PM

excl. VAT & Utilities

price per m²: R80

FEATURES


Gross Monthly Rental Available From Lease Period	R34,480 Excl. VAT Immediately Negotiable
Building Size (m ²)	431
Land Size (m ²)	21950
Zoning	Industrial
Security	No
Power 3 Phase	Yes
Air Conditioning	No


**WEB REFERENCE NO.
COM21133**

Go to 3cubeproperty.co.za
for more information about this property



CONTACT
DONOVAN AKOM

 078 937 6084 / (010) 3006441

 donovan@3cubeproperty.co.za