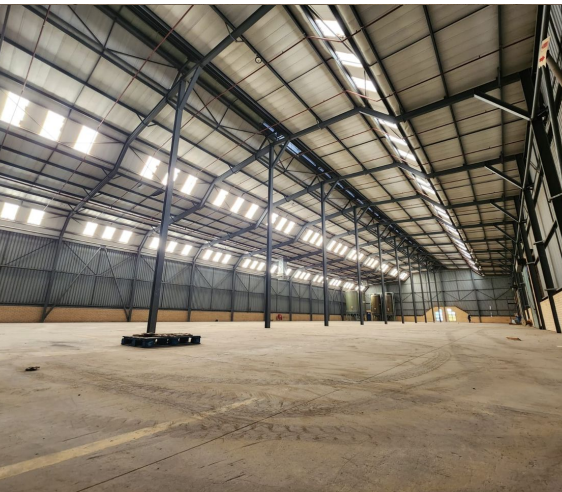




**Midrand, Gauteng**

**Industrial Warehouse/  
Factory TO LET In Grand  
Central/Randjespark, Midrand**



Industrial Warehouse/Factory TO LET in Grand Central/ Randjespark

Fantastic and well located sub-divided warehouse portion of a Free-standing Facility located in Grand Central Midrand, offers convenient access to the recently upgraded Ben Schoeman highway, the premises is located 3.5km from the Midrand Gautrain Station.

1MVA power available.

This property has been specifically designed to cater for warehousing and industrial corporate companies, with excellent layout for your manufacturing and with a sprinkler system installed with back up tanks this can cater quite nicely for your Warehousing needs.

The Facility offers minimal Office space which is ideal for warehousing and being just 3kms from the New Road on-ramp to the ben Schoeman highway it offers convenient access for both staff and goods to be delivered.

The warehouse area has it's own entrance with a guard house to monitor your incoming and outgoing stock, with 4 High roller shutter doors leading into the warehouse area.

**R307,400 PM**  
**excl. VAT & Utilities**  
price per m<sup>2</sup>: R58

**FEATURES**

Gross Monthly Rental Available From Lease Period	R307,400 Excl. VAT Immediately Negotiable
Building Size (m <sup>2</sup> )	5300
Zoning	Industrial
Security	No
Power 3 Phase	Yes
Air Conditioning	No

**WEB REFERENCE NO.**  
**COM20914**

Go to [3cubeproperty.co.za](http://3cubeproperty.co.za)  
for more information about this property



**CONTACT**  
**KEEGAN GOVENDER**

071 889 2530 / (010) 3006441  
keegan@3cubeproperty.co.za