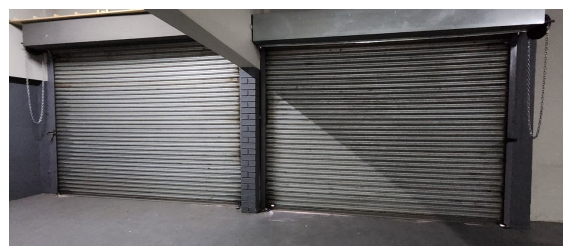
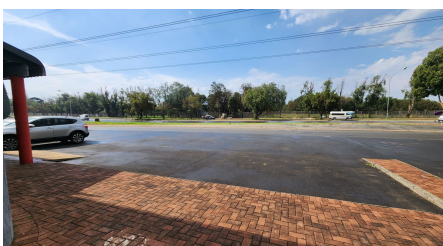
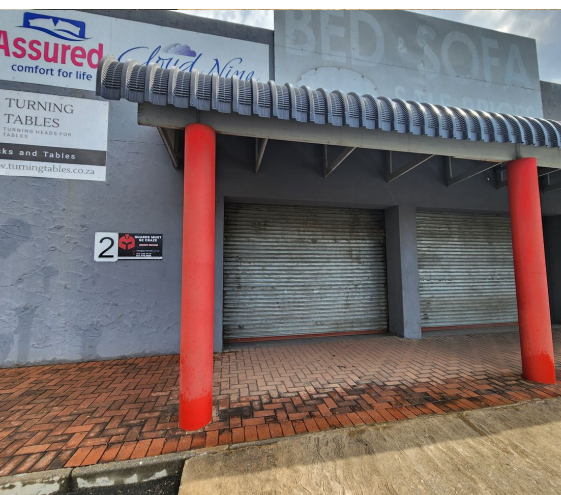


**Kempton Park, Gauteng**

**INDUSTRIAL UNIT TO LET  
WITH MAIN ROAD EXPOSURE  
- MULTIPLE USAGE**



Neat warehousing/retail/factory unit TO LET in Spartan facing Plane Road, with excellent exposure. The unit has multiple usage for various types of industries. Total size under roof 220sqm. With 3 x roller shutter doors for access, 2 of which are road facing and 1 side door.

Neat floors, 3phase power 60amps with pre-paid meter, large office but more can be created, showroom space and kitchen area. The unit can be used for warehousing, storage, light manufacturing, retail and much more. Visibility is excellent for passing trade with plenty of off street parking available. There is a caretaker who assists with the daily running of the park. Easily accessible with Kempton Park, Modderfontein, Isando and Sebenza in Close proximity. O.R. Tambo International Airport is 6km away along with the R21 and R24 freeways.

**AVAILABLE IMMEDIATELY**

**R20,000 PM**

**excl. VAT & Utilities**

price per m<sup>2</sup>: R90

### FEATURES

Gross Monthly Rental Available From Lease Period	R20,000 Excl. VAT Immediately Negotiable
Building Size (m <sup>2</sup> )	220
Zoning	Industrial
Security	No
Power 3 Phase	Yes
Power Amps	60
Air Conditioning	No

**WEB REFERENCE NO.  
COM20769**

Go to [3cubeproperty.co.za](http://3cubeproperty.co.za)  
for more information about this property



**CONTACT**  
**KEVIN AH SING**

☎ 082 225 7621 / (010) 3006441

✉ [kevin@3cubeproperty.co.za](mailto:kevin@3cubeproperty.co.za)