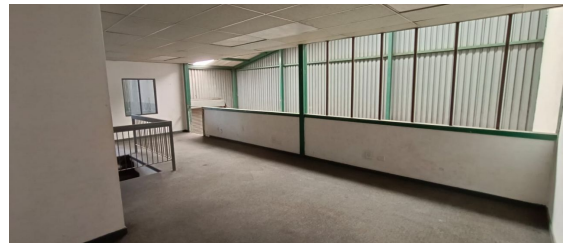




Johannesburg, Gauteng

Versatile Mini Unit With Mezzanine And 24-Hour Security In Enco Park



A mini unit which is an excellent option for those in need of a well-lit and secure workspace. With its generous height, it allows for versatile usage and ample storage opportunities. The unit is flooded with natural light, creating a bright and inviting environment. Access is made simple through a roller shutter door, ensuring both convenience and security. Located within a tidy complex in Enco Park, the property benefits from 24-hour security for peace of mind.

Additionally, the complex offers a three-phase electrical power supply and features a small mezzanine level that can serve as additional storage or office space. The warehouse's impressive height and large roller door facilitate quick and easy access, making it an ideal choice for various business needs, along with two bathrooms for added convenience.

R11,825 PM
excl. VAT & Utilities
price per m²: R55

FEATURES

Gross Monthly Rental Available From Lease Period	R11,825 Excl. VAT Negotiable Negotiable
Building Size (m ²)	215
Zoning	Industrial
Security	Yes
Power 3 Phase	Yes
Air Conditioning	No

WEB REFERENCE NO.
COM19865

Go to 3cubeproperty.co.za
for more information about this property



CONTACT
LUCKY MAKGAMATHO

☎ 073 221 6631 / (010) 3006441
✉ lucky@3cubeproperty.co.za