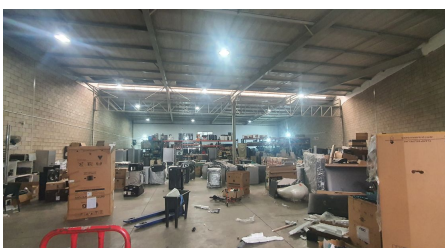
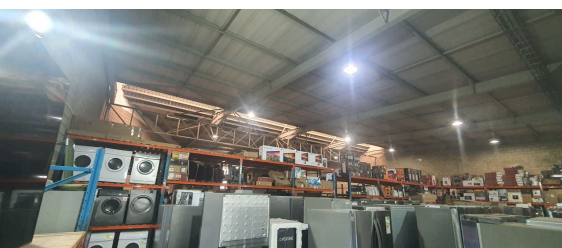
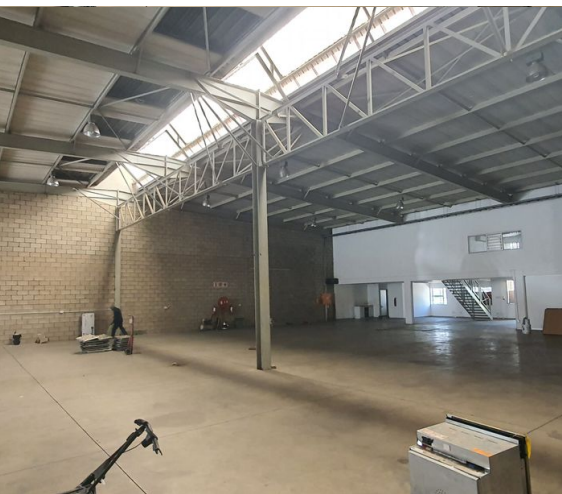




Johannesburg, Gauteng

A grade Warehouse Available To Let in City Deep secure office park



Within two guarded sections, this warehouse is situated in a fantastic location in the center of City Deep. Tenant has convenient access to private transportation and main trade routes because to the excellent truck articulation.

Both the front reception area and the rear roller shutter door—which is intended for dispatch and receiving—offer access to the unit. The structure has a sizable open-plan warehouse and a little, two-story office section.

Please get in touch to schedule a viewing or to get further information.

R61,000 PM
excl. VAT & Utilities
price per m²: R55

FEATURES

Gross Monthly Rental Available From Lease Period	R61,000 Excl. VAT Immediately Negotiable
Building Size (m ²)	1146
Land Size (m ²)	1146
Zoning	Industrial
Security	Yes
Power 3 Phase	Yes
Power Amps	100
Air Conditioning	Yes

WEB REFERENCE NO. COM19312

Go to 3cubeproperty.co.za for more information about this property



CONTACT
SAM PEARSON

082 749 7530 / (010) 3006441
sam@3cubeproperty.co.za