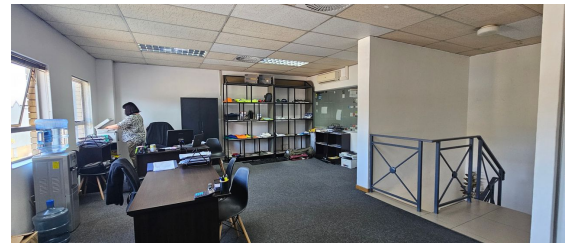
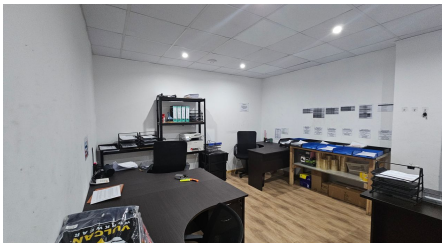
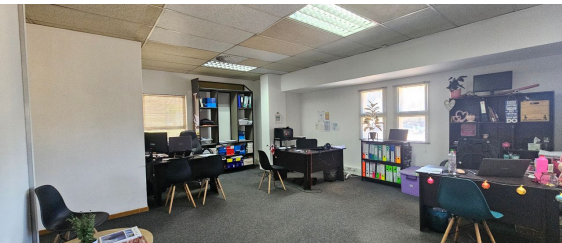
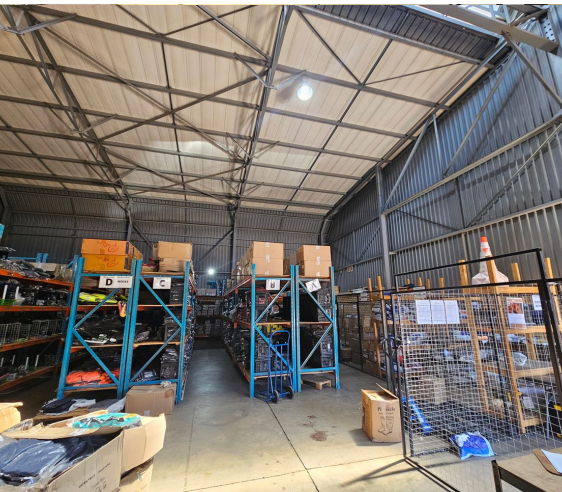


**Germiston, Gauteng**

**Neat A-Grade 540m<sup>2</sup>  
Industrial Unit Available in  
Meadowdale**



Located in the sought-after Meadowhill Industrial Park, Unit 8 offers 540m<sup>2</sup> of versatile space in a secure, well-maintained industrial setting. The unit features a large roller shutter door for easy goods handling and a balanced layout of warehouse and office space, catering to diverse operational requirements.

With excellent height to the eaves, the warehouse is ideal for efficient stacking and benefits from abundant natural light, promoting an energy-efficient work environment. Meadowhill Industrial Park provides 24-hour access-controlled security for peace of mind. Conveniently situated near the R24 and N12 highways, this prime location ensures exceptional accessibility and connectivity for businesses seeking a strategic and secure base.

**R48,000 PM**

**excl. VAT & Utilities**

price per m<sup>2</sup>: R89

**FEATURES**

Gross Monthly Rental Available From Lease Period	R48,000 Excl. VAT Negotiable Negotiable
Building Size (m <sup>2</sup> )	540
Zoning	Industrial
Security	Yes
Power 3 Phase	No
Air Conditioning	No


**WEB REFERENCE NO.  
COM21098**

Go to [3cubeproperty.co.za](http://3cubeproperty.co.za)

for more information about this property



**CONTACT**  
**MARIO GUALTIERI**

 076 524 5870 / (010) 3006441

 [mario@3cubeproperty.co.za](mailto:mario@3cubeproperty.co.za)