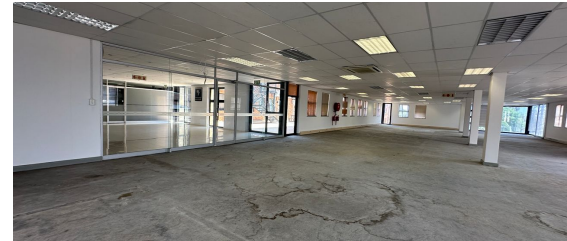




Sandton, Gauteng

Prime 472m² Office Space in Paulshof, Sandton - Designed for Success



R47,200 PM
excl. VAT & Utilities
price per m²: R100

WEB REFERENCE NO.
COM20942

Go to 3cubeproperty.co.za
for more information about this property



Elevate your business with this exceptional 472m² commercial office space in Paulshof, Sandton—a prime location that blends functionality and style to create the ideal work environment. The open-plan design offers flexibility to accommodate your team's unique needs, while large windows flood the space with natural light, promoting productivity and well-being. Its strategic location near major transport routes, public transport, and amenities such as restaurants and retail outlets enhances convenience for both employees and clients. Ample parking facilities further eliminate any logistical concerns.

This property offers flexible lease terms and customizable spaces, allowing you to design a workspace that reflects your brand and vision. With a professional ambiance, secure premises, and a prestigious address in the heart of Sandton's bustling business district, this office is ideal for startups, growing enterprises, or established companies looking to make an impact. Don't miss the opportunity to create your dream workspace—contact us today to arrange a viewing and take the next step in enhancing your business environment.

FEATURES

Gross Monthly Rental Available From Lease Period	R47,200 Excl. VAT Negotiable Negotiable
Building Size (m ²) Zoning Security	472 Commercial No
Power 3 Phase Air Conditioning	No No

CONTACT
CARON HAGUES

☎ 082 457 0269 / (010) 3006441
✉ caron@3cubeproperty.co.za