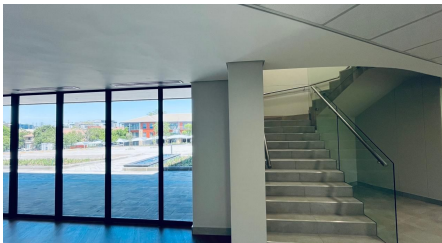
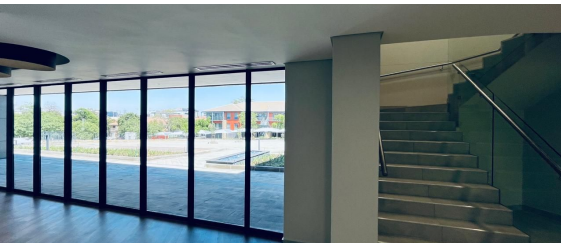




Midrand, Gauteng

First Floor Office to Let in Newly Refurbished Building in Midrand



This first floor office space, previously home to tech giant Honeywell, has been completely refurbished and is available to let. It is a freestanding building within Waterfall Office Park, with fantastic frontage over the N1 highway - excellent signage opportunities available. A generous tenant allowance is provided to contribute to fit out costs.

R214,500 PM
excl. VAT & Utilities
price per m²: R150

WEB REFERENCE NO.
COM20868

Go to 3cubeproperty.co.za
for more information about this property



Waterfall Office Park is a park catering for corporate and small business within a perfectly balanced ecosystem of companies and professionals who work within. Tenants are a mix of international entities, multi-region companies and a myriad of professional service and IT-related businesses that cater to almost every facet of the national economy – all within one business park. Façade upgrades have been planned for this freestanding property with excellent highway visibility.

FEATURES

| | |
|--|--|
| Gross Monthly Rental Available From Lease Period | R214,500 Excl. VAT Immediately 36 months |
| Building Size (m ²) | 1430 |
| Land Size (m ²) | 1430 |
| Zoning | Commercial |
| Security | Yes |
| Open Parkings | 12 |
| Power 3 Phase | No |
| Air Conditioning | Yes |

CONTACT
TESSA JOSEPH

☎ 0615243372 / (010) 3006441
✉ tess@3cubeproperty.co.za