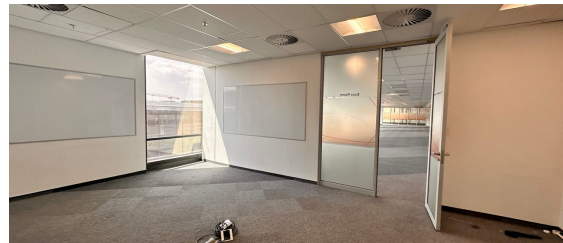
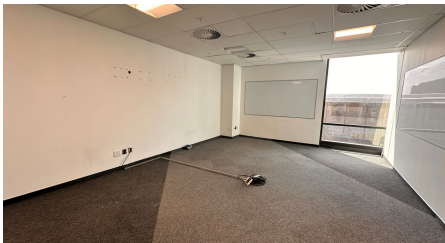
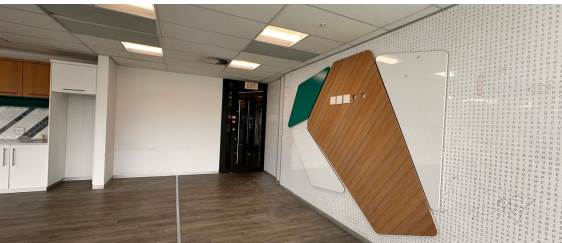




Johannesburg, Gauteng

Spacious Open Plan Office in Rosebank



This 718sqm office at 19 Bierman Avenue, Rosebank, offers a spacious and adaptable layout, perfect for businesses seeking to tailor their workspace. Recently subdivided from a larger office, the space provides the opportunity for customization to meet your specific requirements. Upon entry, you'll find an open-plan area that transitions into a larger, expansive space, ideal for collaborative projects or team activities. The office also includes two well-sized meeting rooms for private discussions and two kitchen areas to enhance staff convenience.

Ideally situated just moments from The Zone and The Mall of Rosebank, this location provides easy access to an array of shopping, dining, and entertainment options. The nearby Gautrain station further enhances connectivity to other major business hubs, making this office an excellent choice for businesses seeking convenience and a vibrant working environment in the heart of Rosebank. Please note that the listed price excludes utilities, parking, generator recovery, and VAT.

R157,960 PM
excl. VAT & Utilities
price per m²: R220

FEATURES

| | |
|--|--|
| Gross Monthly Rental Available From Lease Period | R157,960 Excl. VAT Immediately 36 months |
| Building Size (m ²) | 718 |
| Zoning | Commercial |
| Security | Yes |
| Power 3 Phase | No |
| Air Conditioning | Yes |

WEB REFERENCE NO. COM21253

Go to 3cubeproperty.co.za for more information about this property



CONTACT
LESLEY MICHAEL-THRUPP

0736095207 / (010) 3006441
lesley@3cubeproperty.co.za