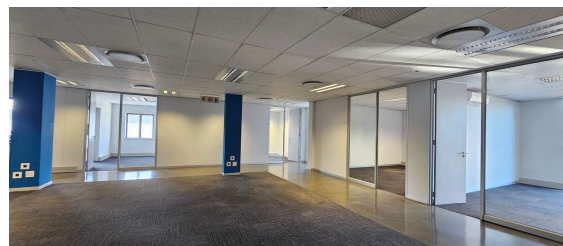
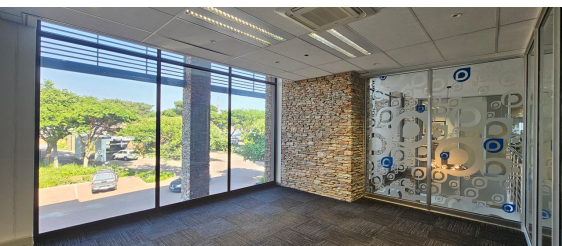
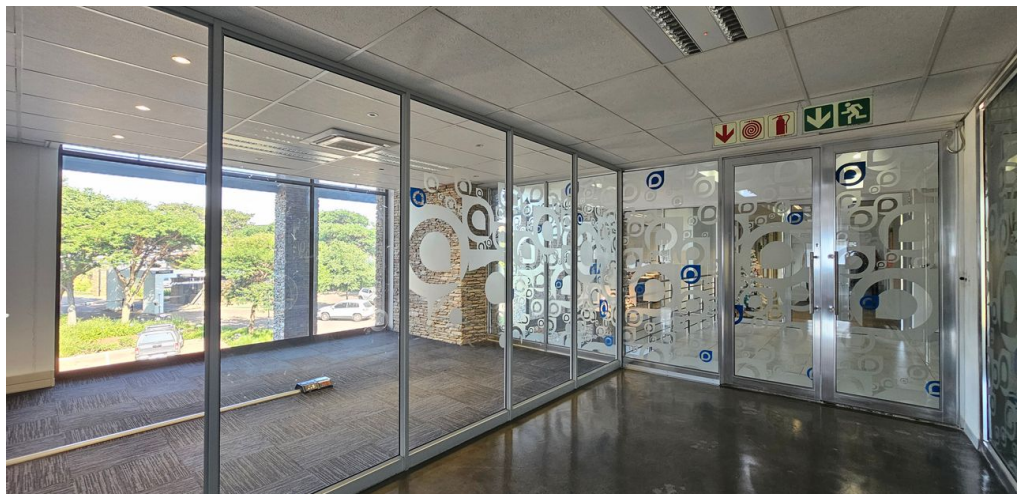
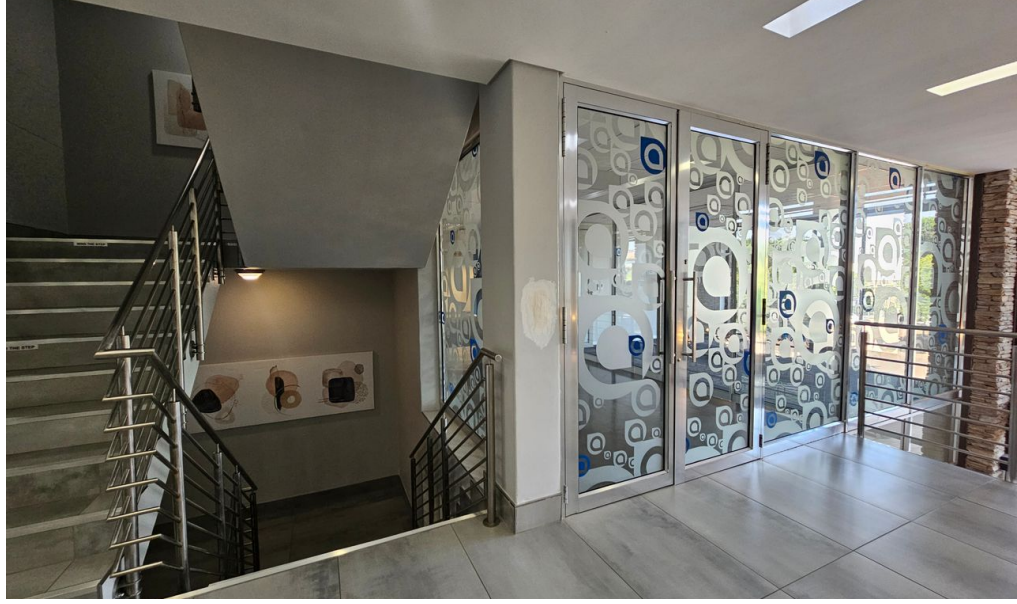


Edenvale, Gauteng

Spacious First Floor Office Space, with a View Available for Lease at Stoneridge Office Park



This first floor office space, is strategically positioned at the park's entrance. It presents a versatile and professional environment designed to cater to diverse business requirements. The thoughtfully planned layout includes a large welcoming open plan office space that is surrounded by smaller office sections. There are two corner offices with breath taking views, as well as a large corporate, corner board room with a welcoming aura. The space is neat and modern with the building containing a lift for easy access. Ensuring operational continuity, the building is equipped with a reliable backup water supply and generator-powered electricity. Perfectly situated in a vibrant and accessible location, this office space combines practicality with a prime address to enhance your business operations.

Greenstone area, the office provides easy access to major transport routes, including the N3 highway and R25. Nestled within the Edenvale residential node, it is surrounded by key amenities such as Greenstone Mall, Stoneridge Centre, and Busamed Private Hospital, offering convenience and connectivity in a thriving business hub.

R38,905 PM

excl. VAT & Utilities

price per m²: R155

FEATURES


Gross Monthly Rental Available From Lease Period	R38,905 Excl. VAT Negotiable 36 months
Building Size (m ²)	251
Zoning	Commercial
Security	Yes
Power 3 Phase	No
Air Conditioning	Yes


**WEB REFERENCE NO.
COM20931**

Go to 3cubeproperty.co.za
for more information about this property



CONTACT
CASSANDRA DELACOVIA

 071 895 8267 / (010) 3006441

 cassie@3cubeproperty.co.za